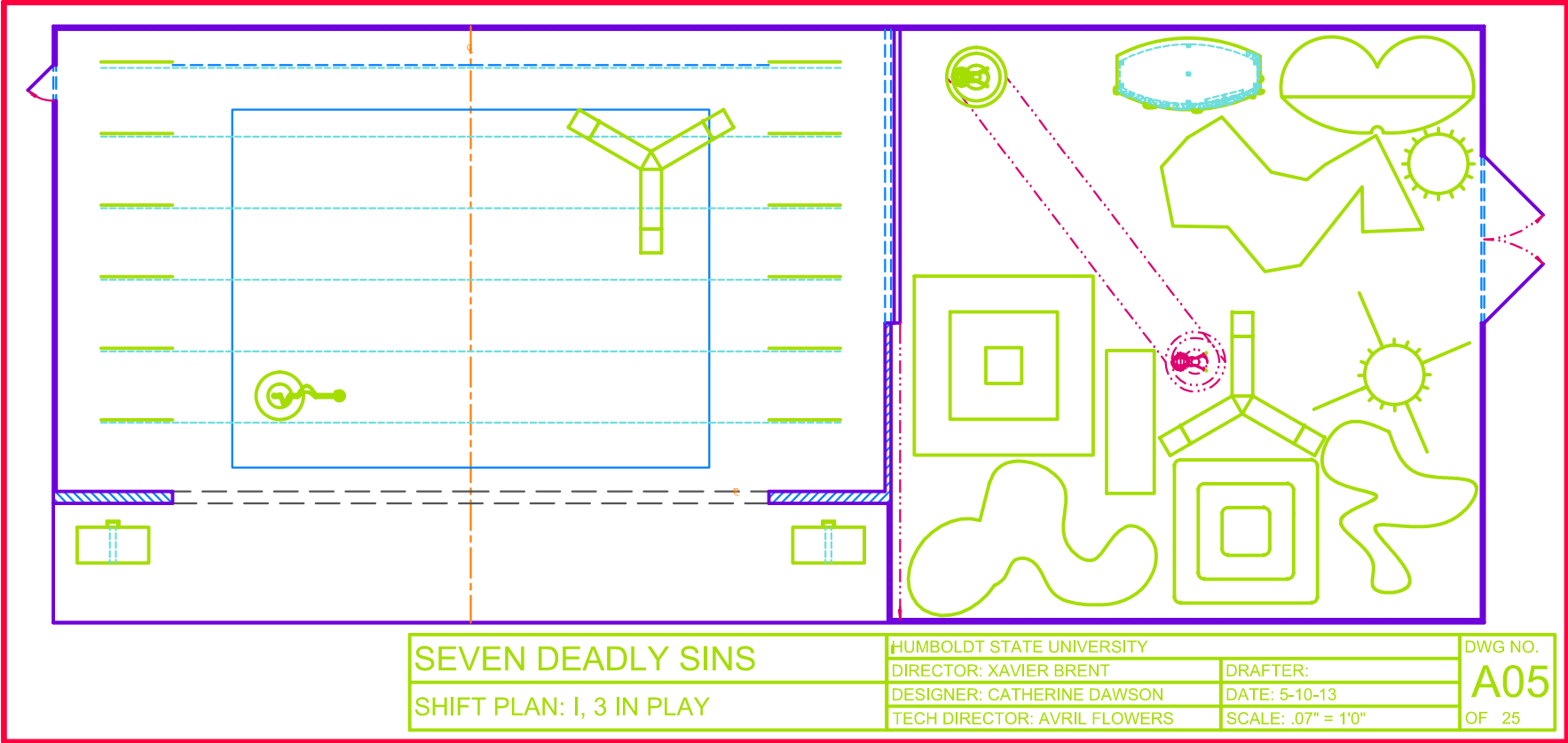
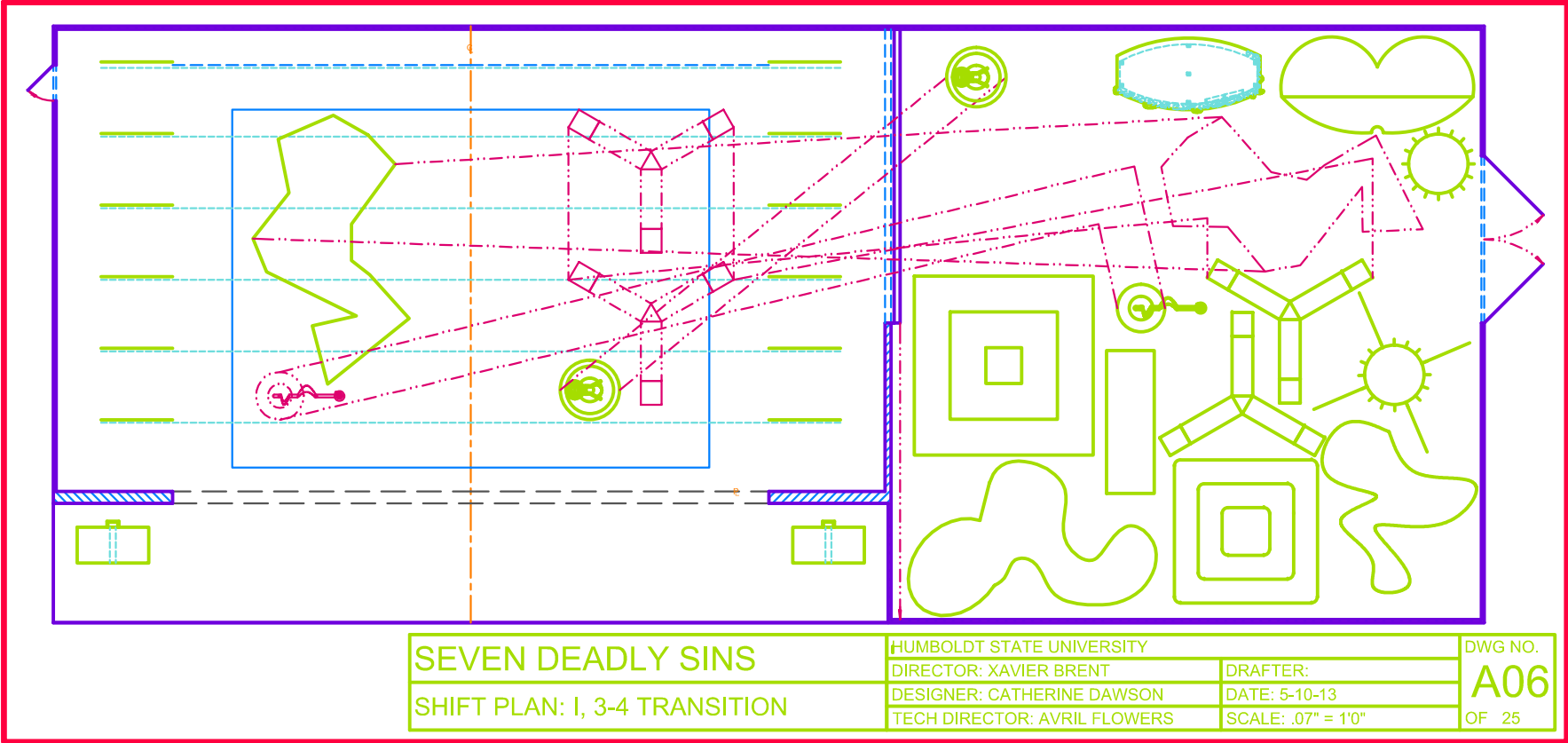


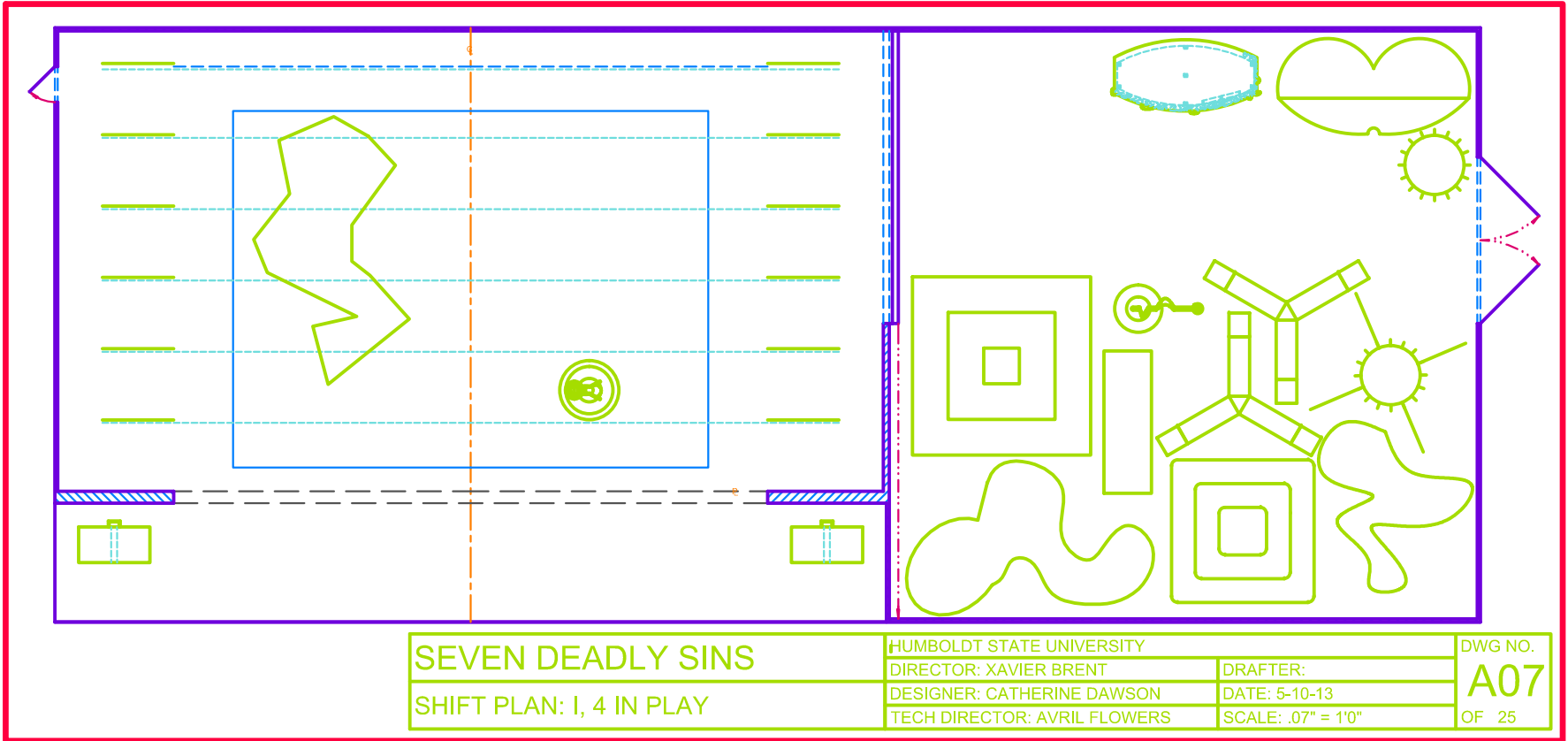
PRODUCED BY AN AUTODESK EDUCATIONAL PRODUCT

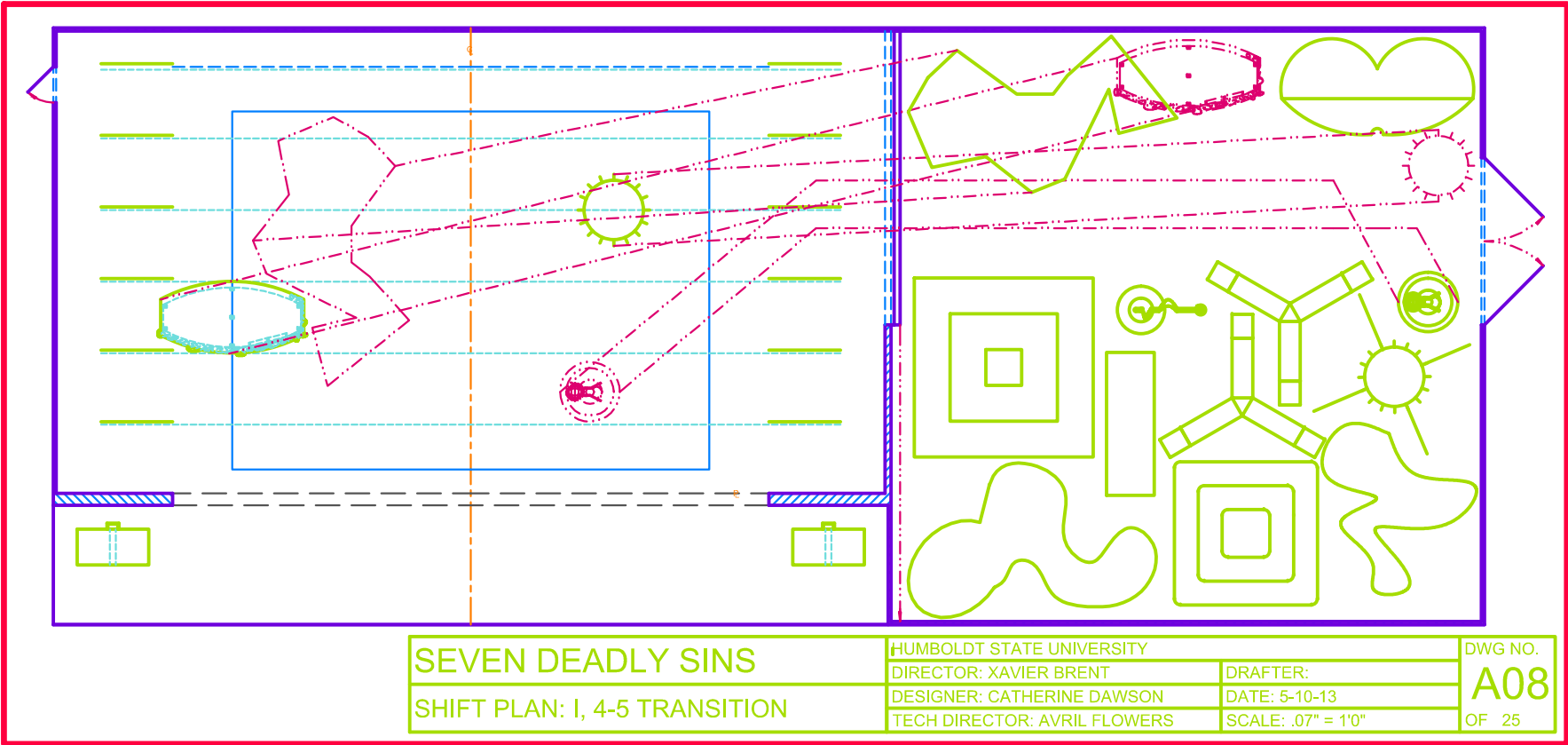
PRODUCED BY AN AUTODESK EDUCATIONAL PRODUCT



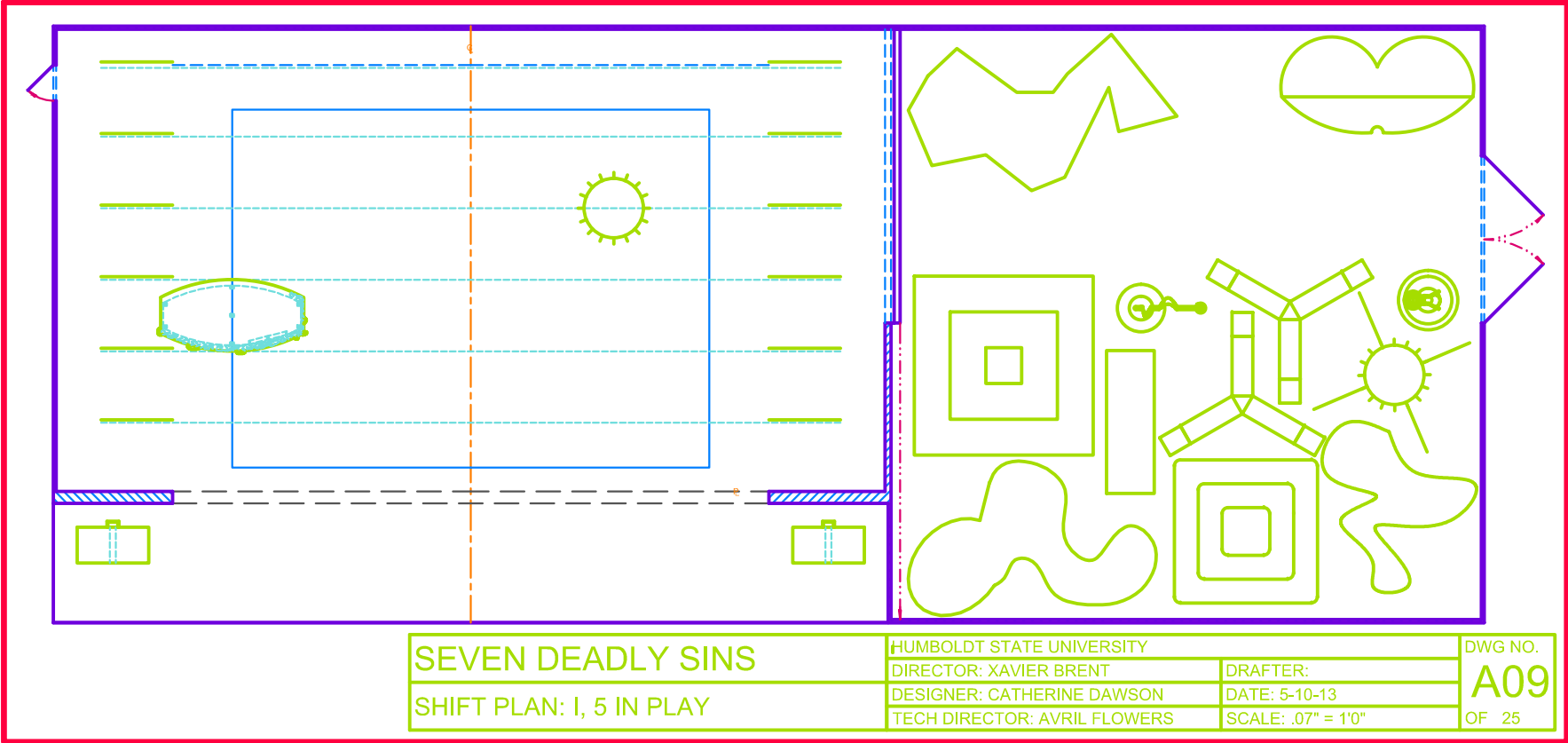


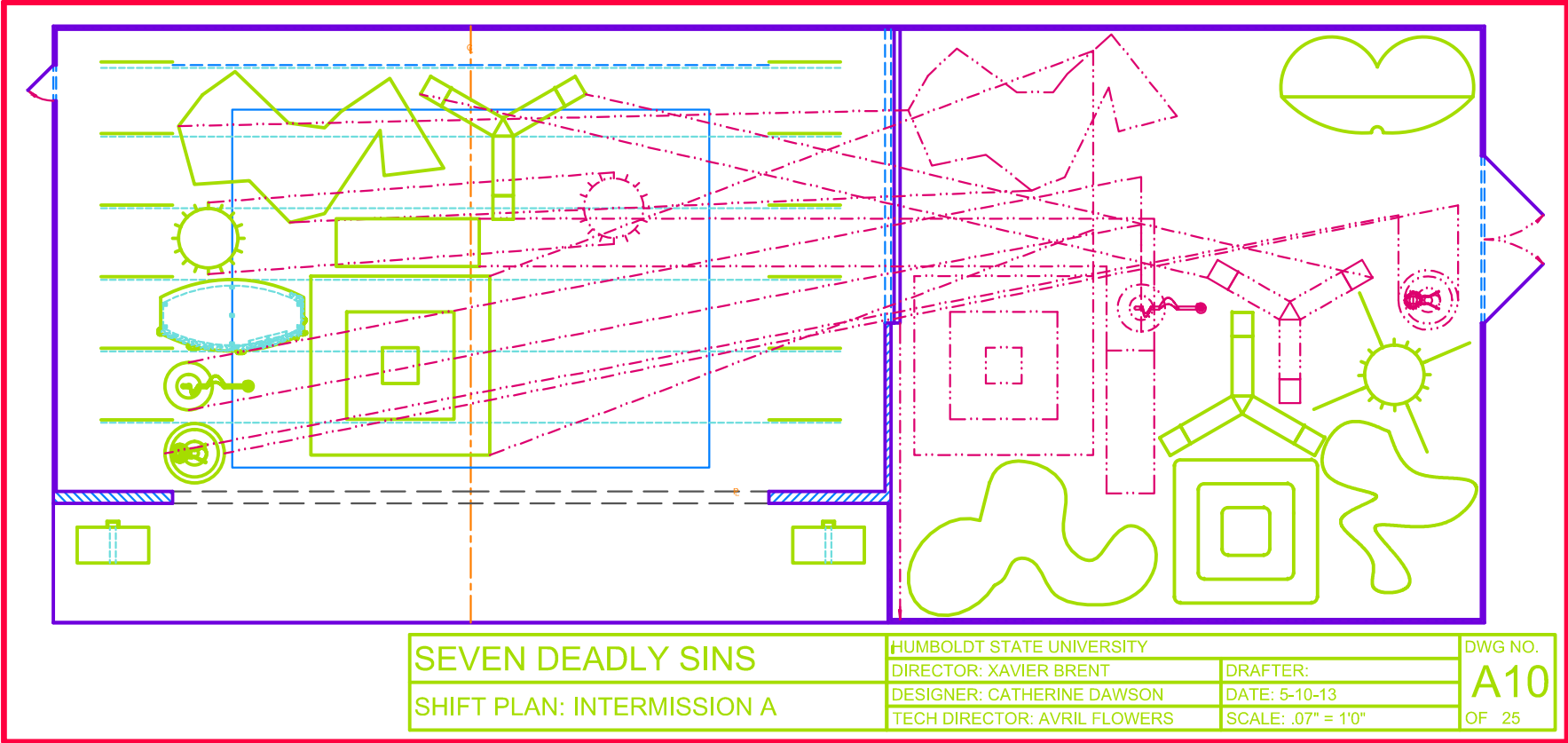
PRODUCED BY AN AUTODESK EDUCATIONAL PRODUCT





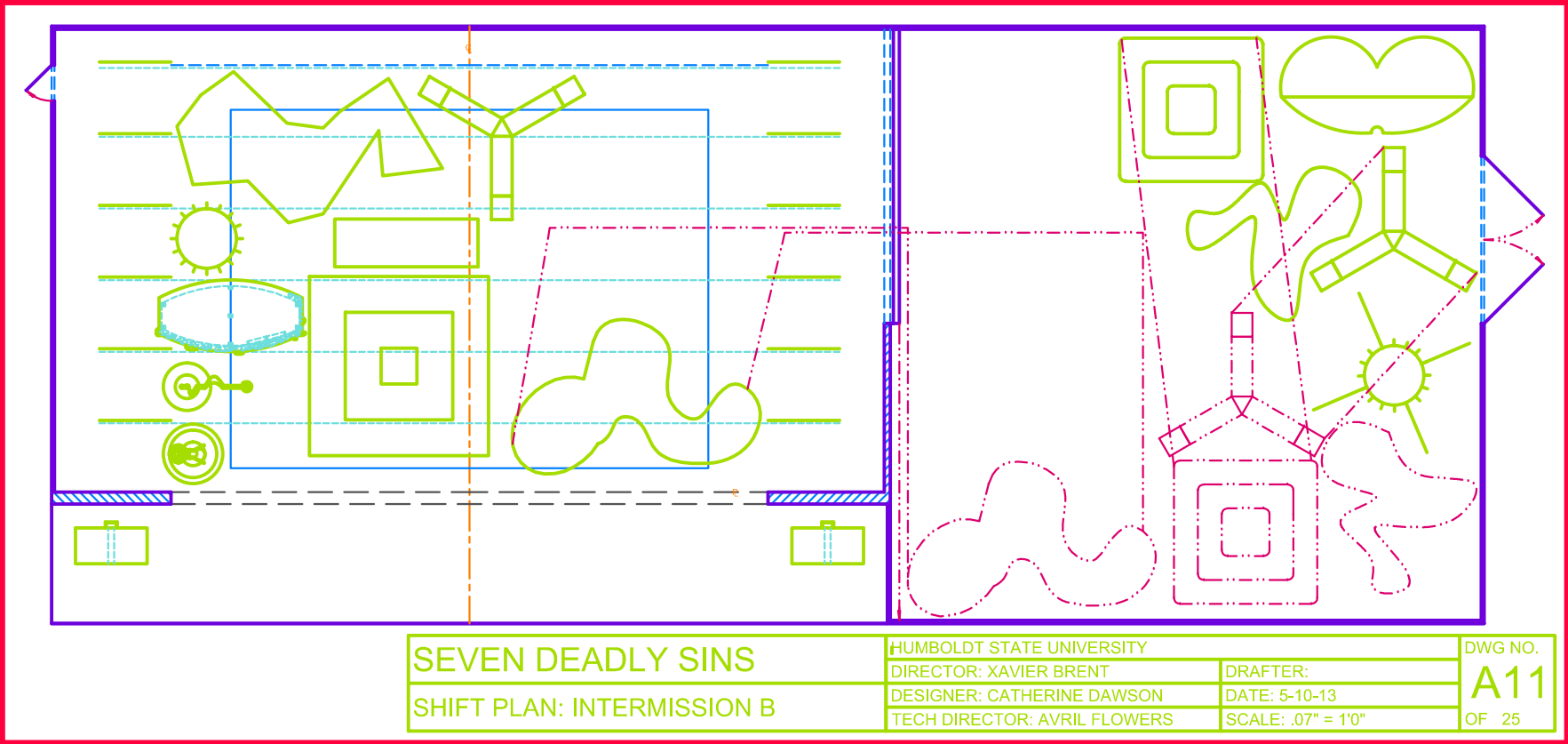


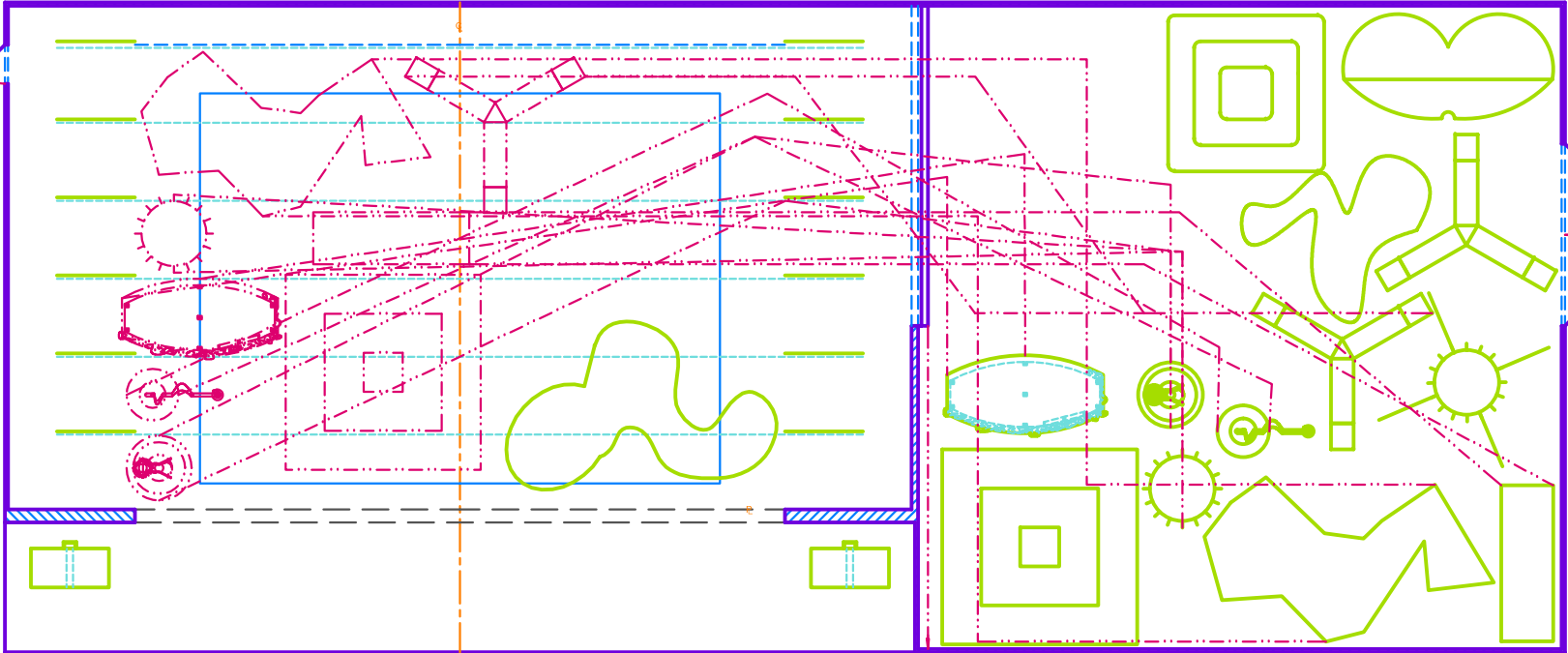




PRODUCED BY AN AUTODESK EDUCATIONAL PRODUCT

PRODUCED BY AN AUTODESK EDUCATIONAL PRODUCT





SEVEN DEADLY SINS

SHIFT PLAN: INTERMISSION C

HUMBOLDT STATE UNIVERSITY

DIRECTOR: XAVIER BRENT

DESIGNER: CATHERINE DAWSON

TECH DIRECTOR: AVRIL FLOWERS

DRAFTER:

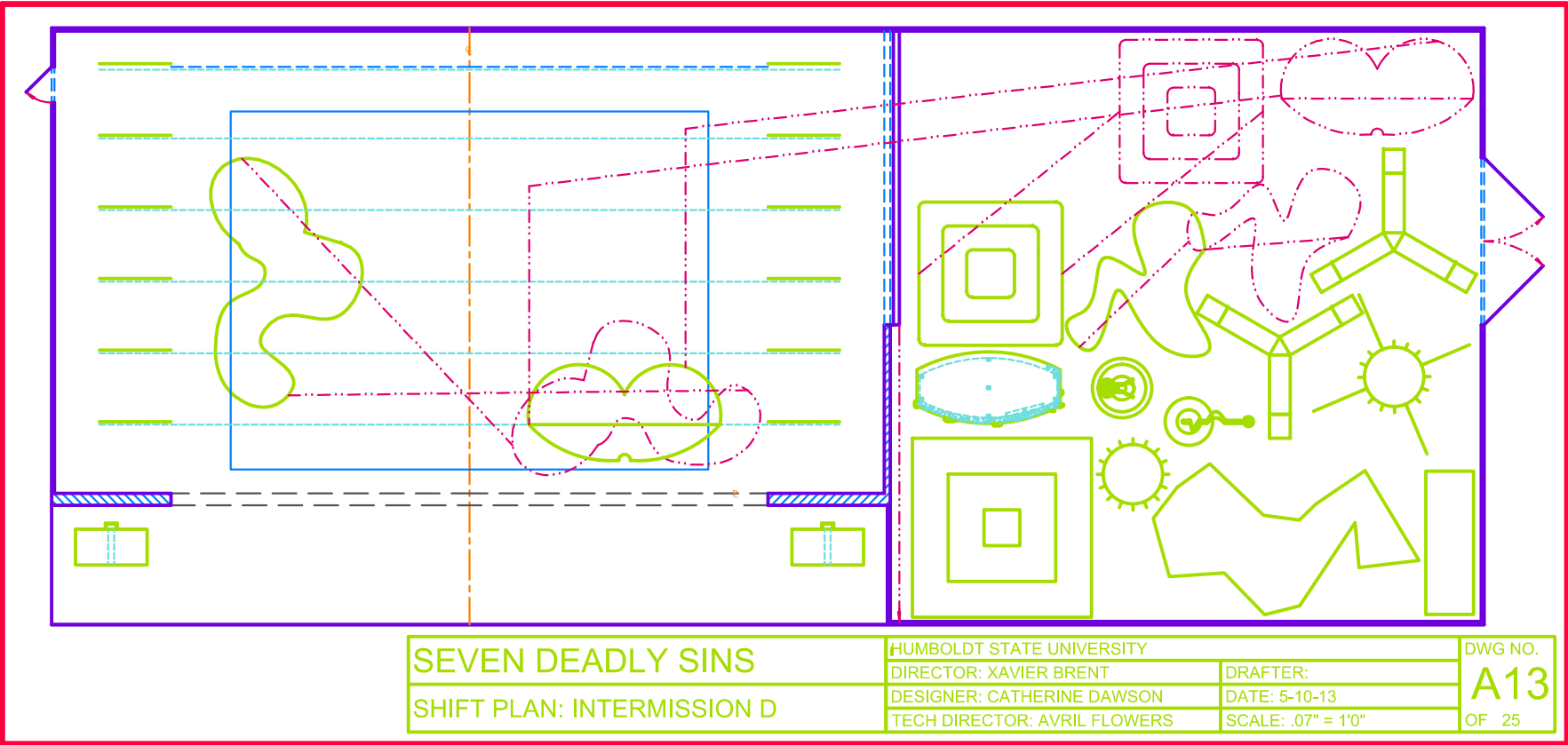
DATE: 5-10-13

SCALE: .07" = 1'0"

DWG NO.

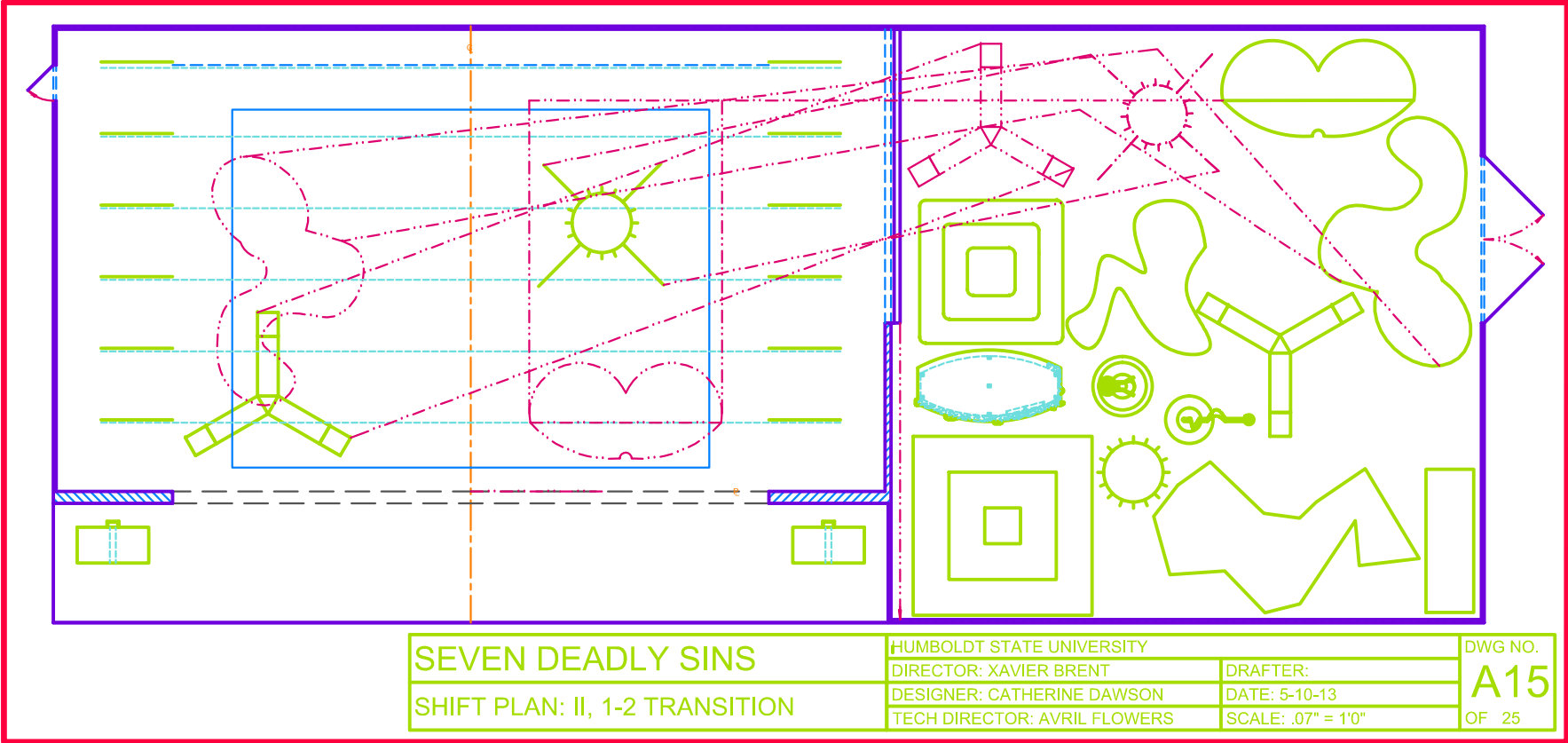
A12

OF 25



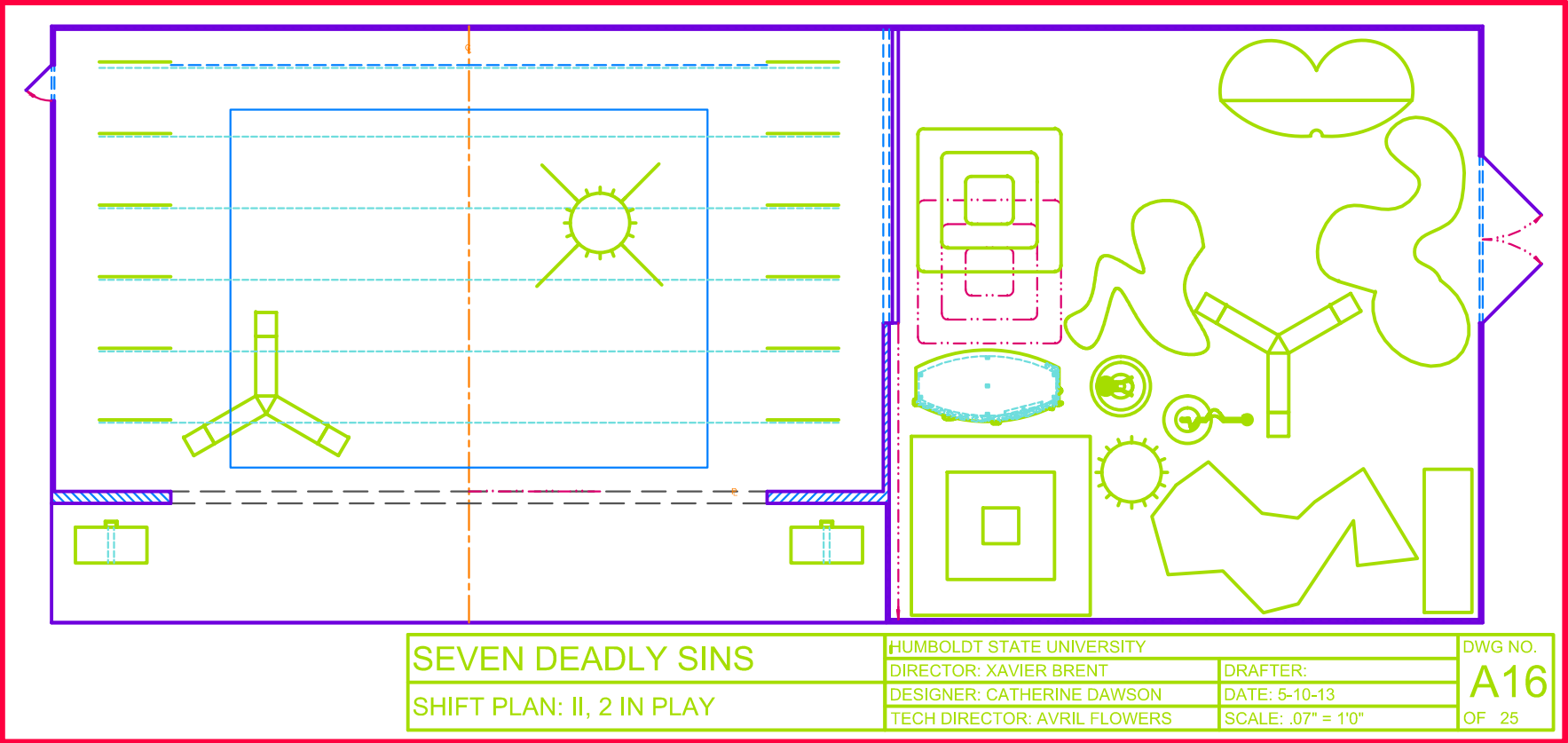
PRODUCED BY AN AUTODESK EDUCATIONAL PRODUCT



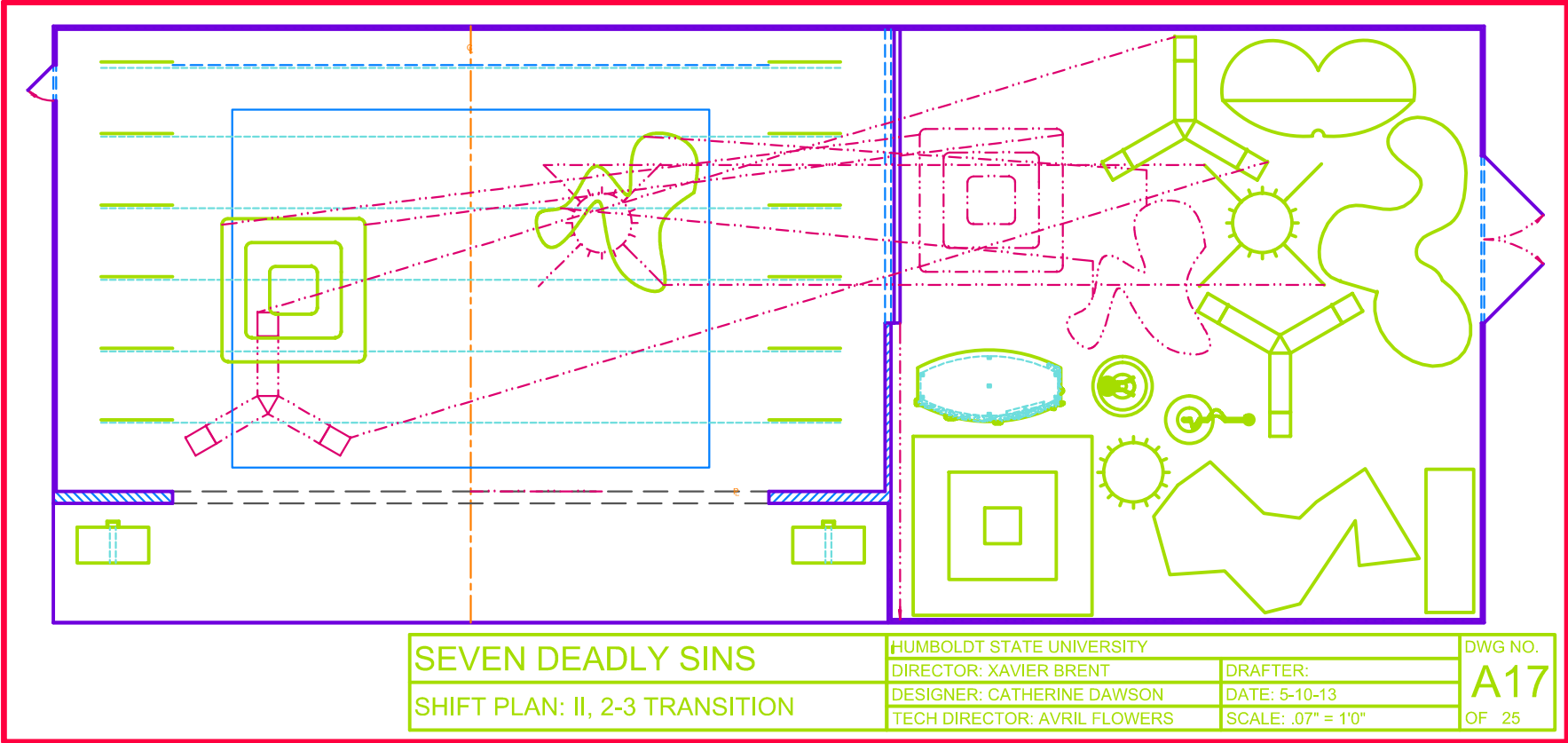


PRODUCED BY AN AUTODESK EDUCATIONAL PRODUCT

PRODUCED BY AN AUTODESK EDUCATIONAL PRODUCT

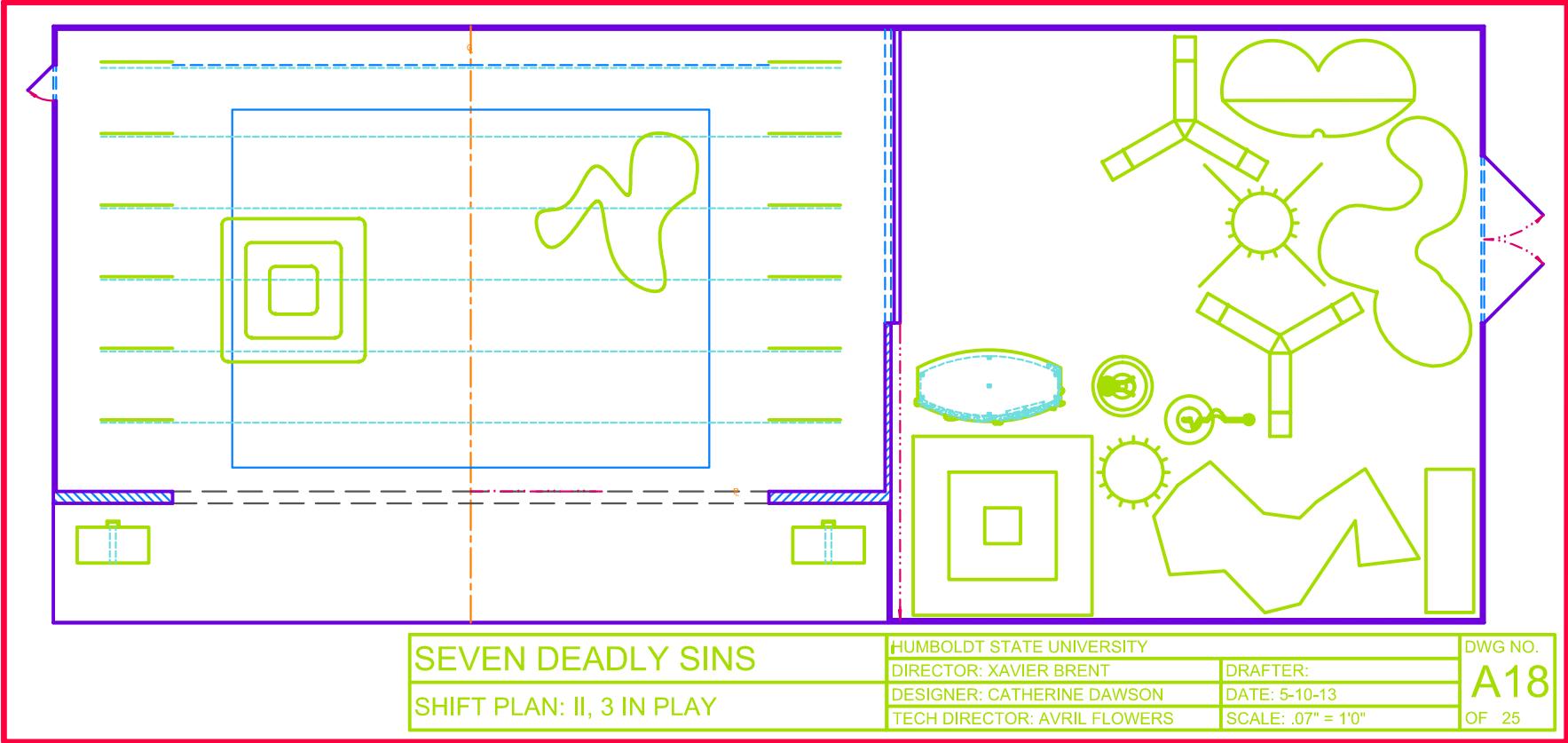






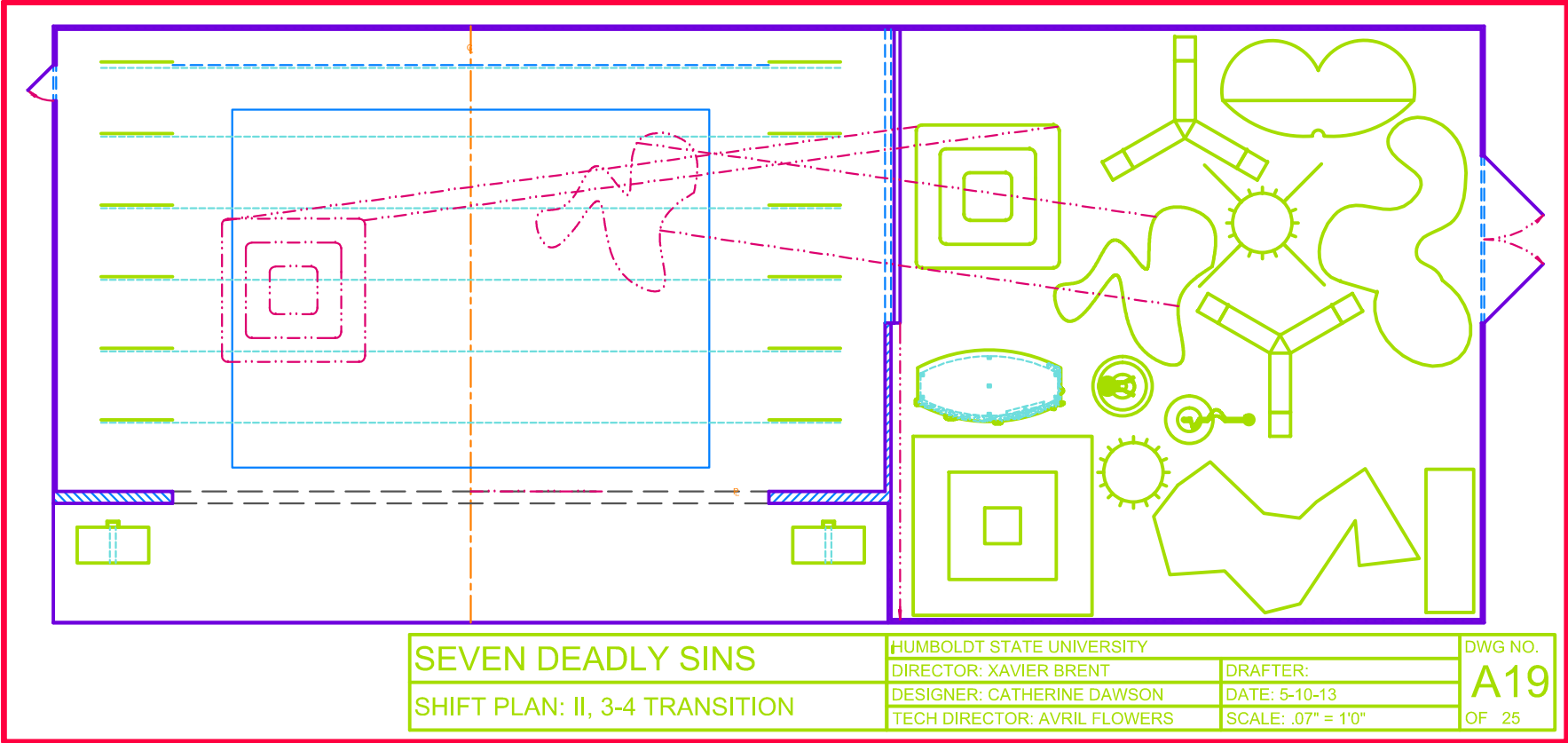
PRODUCED BY AN AUTODESK EDUCATIONAL PRODUCT

PRODUCED BY AN AUTODESK EDUCATIONAL PRODUCT



PRODUCED BY AN AUTODESK EDUCATIONAL PRODUCT

PRODUCED BY AN AUTODESK EDUCATIONAL PRODUCT



PRODUCED BY AN AUTODESK EDUCATIONAL PRODUCT

PRODUCED BY AN AUTODESK EDUCATIONAL PRODUCT

